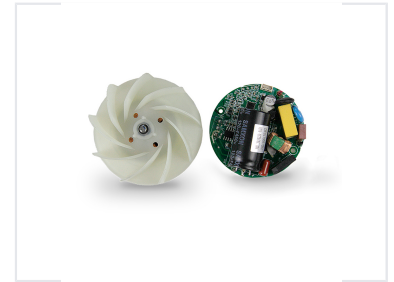
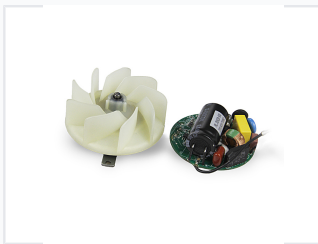


# Brushless DC Motor for Hair Dryers

This brushless DC motor is designed for use in hair dryers. It features a compact design with an integrated electronic control board for efficient and reliable operation.



## ADDITIONAL IMAGES



## Overview

### High-Efficiency BLDC Motor

This brushless DC (BLDC) motor is engineered specifically for modern, energy-efficient hair dryer applications. It features a compact, integrated design that combines the motor with an electronic control board, simplifying assembly and enhancing overall performance. With an optimized multi-blade impeller for superior airflow and robust power components, this unit provides reliable and precise speed control for professional-grade hair drying equipment.

## Technical Specifications

### Capacitor Rating

**120  $\mu$ F**  
Capacitance

**450 V**  
Voltage

Motor Type	Brushless DC (BLDC)
Power Input	AC

## Design & Components

### Integrated Components

- Electronic control board
- Multi-blade impeller
- Surface mount electronic components
- Resistors and integrated circuits

### Design Advantages

Compact Design • Energy Efficient • Stable Power Delivery • Optimized Airflow