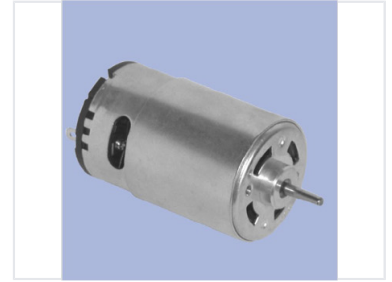


Brushed DC Motor with Metal Housing

This high-performance brushed DC motor is designed for diverse applications. Its robust metal housing ensures durability and efficient heat dissipation.



Product Overview

High-Performance Brushed DC Motor

This brushed DC motor is engineered for reliability and efficient performance across a variety of electromechanical applications. Featuring a robust metal housing, it provides excellent durability and superior heat dissipation during operation. Its compact design and precision-engineered shaft make it an ideal choice for robotics, automation systems, and other projects requiring consistent rotational motion.

Key Features

Key Features
Metal Housing, Long Lifespan Brushes, Optimized Armature, Compact Design

Applications

Suitable Applications

- Robotics
- Automation Systems
- Electromechanical Systems