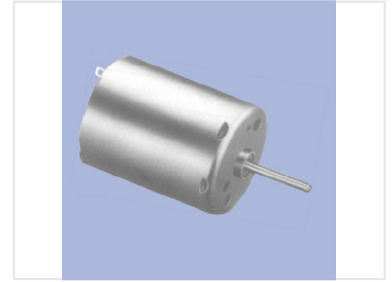


Brushed DC Electric Motor

This brushed DC motor is commonly used in applications requiring rotational motion. The motor operates on direct current and converts electrical energy into mechanical energy to provide torque and speed.



Overview

Versatile Brushed DC Motor

This brushed DC electric motor is designed to convert electrical energy into reliable mechanical energy, providing the torque and speed necessary for various applications. Featuring a compact cylindrical housing and a standard shaft output, it is an ideal component for robotics, automotive systems, and small appliances. Its robust design ensures consistent performance for diverse engineering projects requiring efficient rotational motion.

Technical Specifications

Key Features

- Compact cylindrical housing
- Standard shaft output
- Direct current operation
- Reliable torque delivery

Motor Type	Brushed DC Motor
Common Applications	Robotics, Automotive, Appliances