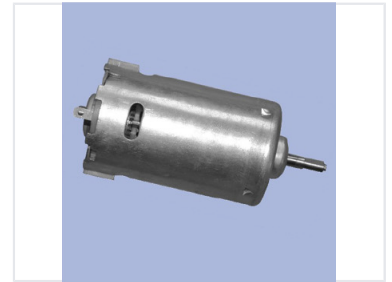


# Brushed DC Electric Motor

This is a compact brushed DC electric motor designed for general-purpose applications. It provides rotational power through a shaft extending from one end and is suitable for low-voltage operation.



## Overview

### Compact Brushed DC Motor

This brushed DC electric motor is designed for general-purpose applications, offering reliable rotational power. Featuring a durable cylindrical metal housing and integrated ventilation openings, it is built for consistent performance in various mechanical systems. Its compact design makes it an ideal solution for robotics, hobbyist projects, and small appliance integration.

## Technical Specifications

### Construction Features

- Cylindrical metal housing
- Integrated ventilation openings
- Standard shaft output
- Mounting features

### Operation

Low-voltage compatible

<b>Motor Type</b>	Brushed DC
<b>Common Applications</b>	Robotics, Hobby Projects, Small Appliances, General Purpose