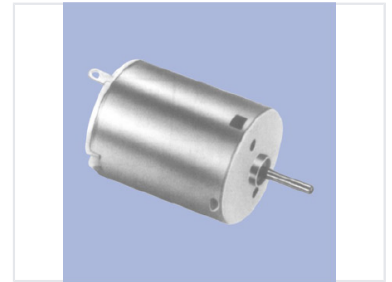


# Brushed DC Electric Motor

This brushed DC motor is designed for low-power applications. It features a cylindrical housing with ventilation holes and a protruding shaft.



## Overview

### Compact Brushed DC Motor

This brushed DC electric motor features a robust cylindrical metallic housing designed for efficient operation in small-scale devices and robotics. It is equipped with a protruding shaft for precise mechanical output and integrated terminals for straightforward electrical connection. The inclusion of ventilation holes assists in thermal management, ensuring reliable performance in low-power applications.

## Design & Construction

### Motor Type

Brushed DC

### Housing Material

Metallic

### Key Features

Ventilated, Compact Design, Protruding Shaft

## Applications

### Suitable For

- Small-scale devices
- Robotics
- Low-power applications