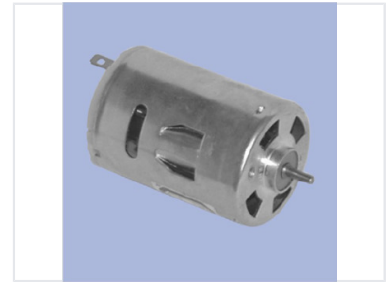


Brushed DC Electric Motor

This brushed DC electric motor is commonly used in applications requiring rotary motion. It features a cylindrical metal housing with ventilation slots and a shaft for load connection.



Overview

Brushed DC Electric Motor

This brushed DC electric motor is designed for applications requiring consistent rotary motion. Featuring a cylindrical metal housing with integrated ventilation slots, it ensures reliable cooling during operation. Its compact form factor, combined with high starting torque and ease of control, makes it an ideal solution for robotics, small appliances, and various hobbyist projects.

Technical Specifications

Motor Type	Brushed DC
Design Features	Cylindrical Housing, Ventilated, Compact

Performance

Key Performance Indicators

1 High

Starting Torque

Applications

Typical Applications

- Small appliances
- Robotics
- Toys
- General rotary motion