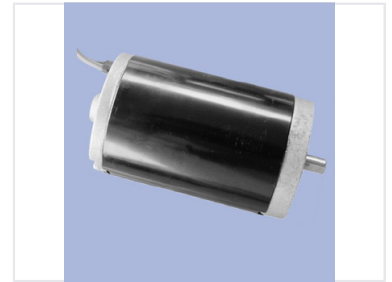


# Brushed DC Electric Motor

This brushed DC motor is commonly used in applications requiring rotational motion. It operates on direct current, utilizing brushes to commutate current in the rotor windings for continuous torque.



## Product Overview

### Brushed DC Motor Overview

This brushed DC electric motor is designed for applications requiring consistent rotational motion. Featuring a durable cylindrical housing and reliable power transmission via its output shaft, this unit operates on direct current to provide continuous torque. It is an ideal solution for various industrial and commercial projects where moderate power levels are required.

## Physical Characteristics

Housing Material	Steel
End Cap Material	Aluminum

## Technical Specifications

Motor Type	Brushed DC Motor
Cooling Method	Natural Convection