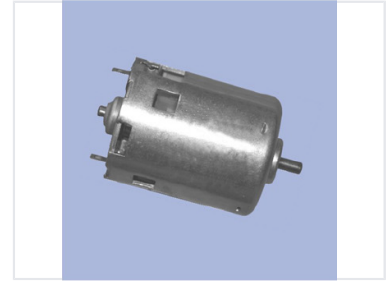


# Brushed DC Electric Motor

This brushed DC electric motor is designed for various applications requiring rotational motion. It operates on direct current and utilizes brushes to commutate the current to the rotor windings.



## Product Overview

### Brushed DC Electric Motor

This brushed DC electric motor is designed for applications requiring reliable rotational motion. Featuring a durable cylindrical metal housing with integrated ventilation, it offers efficient performance for robotics, automotive accessories, and small appliances. The dual-shaft design provides flexible mounting options, while the low-voltage operation ensures a cost-effective solution for mechanical power generation.

## Technical Specifications

Motor Type	Brushed DC
Design Features	Cylindrical metal housing, Ventilation openings, Dual-shaft extension
Electrical Connection	Terminal block

## Applications

### Typical Applications

- Robotics
- Automotive accessories
- Small appliances
- Toys