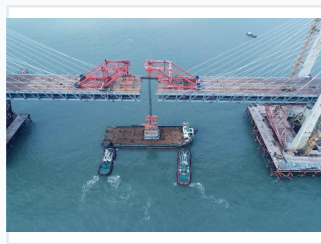
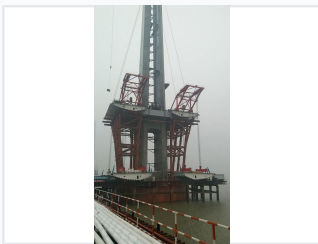


Bridge Segment Lifter

The segment lifter is a specialized crane used to lift and position precast concrete segments during bridge construction. It is designed for high precision and heavy lifting, ensuring efficient assembly of bridge structures.



ADDITIONAL IMAGES



Product Overview

Professional Bridge Construction Solution

The segment lifter is a specialized heavy-duty crane engineered for the precise installation of precast concrete or steel bridge segments. Designed for continuous construction efficiency, it supports the assembly of bridge superstructures by lifting and positioning segments from ground-level transport or barges. With a proven track record in major international infrastructure projects, this equipment combines advanced hydraulic controls with robust gantry frames to ensure structural integrity and safe, efficient bridge assembly.

Technical Capabilities

Maximum Lifting Capacity

1100 t
Capacity

Compatible Systems

- Launching gantry
- Girder transporter
- Gantry crane
- Formwork
- Straddle carrier
- MSS
- Form traveller

Operational Features

Design Advantages

- High-precision hydraulic control systems
- Designed for continuous construction movement
- Suitable for both land-based and barge-based operations
- Robust structural integrity for large-scale bridge decks

Key Applications

Bridge Construction, Precast Segment Installation, Infrastructure Development, Heavy Lifting