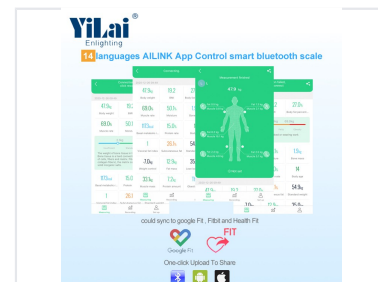


# Bluetooth Body Composition Analyzer with 8 Electrodes

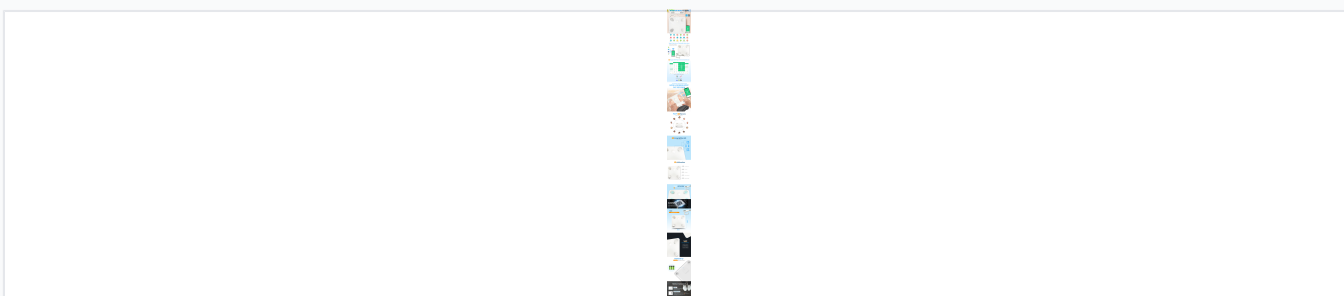
This Bluetooth body composition analyzer uses 8 electrodes for comprehensive body composition analysis. It accurately measures various health indicators, including body weight, body fat percentage, and muscle mass, with data displayed on a smartphone app.



## ADDITIONAL IMAGES



## Overview



Comprehensive body composition analyzer featuring BIA technology, 8-user support, and a high-accuracy LED display.

### Advanced Segmental Body Analysis

This Bluetooth Body Composition Analyzer utilizes 8-electrode cross-measurement technology to provide precise segmental analysis of individual body parts, including arms, legs, and torso. The smart scale integrates seamlessly with the Ai Link app, supporting up to 8 user profiles for comprehensive health tracking. Designed with a sleek 5mm tempered glass platform and a high-visibility LED display, it offers a professional-grade solution for monitoring weight, body fat, and 14+ essential health metrics.

## Key Performance Metrics

### Key Performance Metrics

**180 kg**

Max Capacity

**8**

Electrodes

**100 g**

Graduation

## Body Composition Metrics

### Measured Parameters

Body Weight, Body Fat %, Visceral Fat, Body Water, Muscle Percentage, Bone Mass, BMI, Protein, Heart Rate, Subcutaneous Fat, Basal Metabolic Rate, Body Age

## Technical Specifications

Platform Material	5mm Tempered Glass
Scale Size	280 x 280 x 22 mm
Display	LED display with 28mm segment height
Power Supply	3 x AAA batteries (included)

## Connectivity & App

### Smart Features

- App Name: Ai Link
- Bluetooth Connectivity
- Supports 14 languages
- Data sync with Google Fit, Fitbit, and Health Fit
- Automatic daily measurement comparison
- Multi-user support (up to 8 persons)

## Advanced Technology

### Measurement Technology

BIA Biometric Technology • 8-Electrode Segmental Analysis • Cross Measurement

## Measurement Units

Supported Units	KG, LB, ST
-----------------	------------