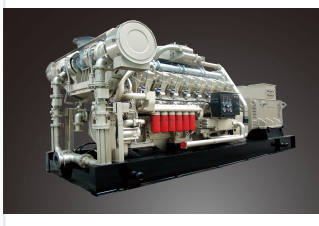


Biogas Engine and Genset

This biogas engine and genset is designed for efficient and reliable power generation using biogas as fuel. The system provides stable power output for various applications and is engineered for continuous operation.



ADDITIONAL IMAGES



Product Overview

Sustainable Power Generation

The 190 series biogas engine and genset is engineered for high-efficiency, continuous power generation using biogas as a primary fuel source. Designed for reliability and stability, this system incorporates advanced combustion technology and a robust engine block to ensure optimal performance in demanding environments. It serves as a sustainable and cost-effective solution for combined heat and power (CHP) systems, waste-to-energy projects, and distributed power generation.

Technical Features

Key Features

- Advanced combustion technology for high thermal efficiency
- Continuous operation capability
- Comprehensive monitoring and protection control system
- Modular components for ease of maintenance
- Remote monitoring capabilities
- Compliant with stringent emission standards

Suitable Applications

Combined Heat and Power (CHP), Waste-to-Energy, Distributed Generation, Renewable Energy

Performance Metrics

Performance Highlights

190 series

Series Designation