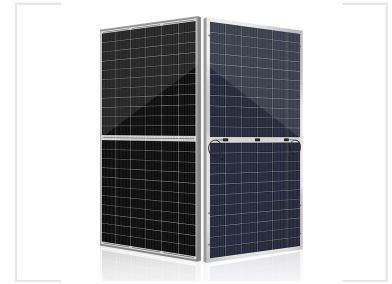


# Bifacial Half-Cell Solar Module

This half-cell bifacial module combines high-efficiency bifacial technology with half-cell technology. It yields up to 30% more energy from back side power generation, depending on the albedo/reflectivity of the project site.



## Product Overview

### High-Efficiency Bifacial Technology

This advanced half-cell bifacial module harnesses light from both front and rear surfaces, yielding up to 30% additional energy depending on site reflectivity. The dual-glass construction is engineered to minimize micro-cracks and environmental degradation while maintaining superior performance at low irradiance. By reducing LCOE and BoS costs, this module serves as an ideal solution for utility-scale and commercial projects seeking to maximize ROI.

## Performance Metrics

### Efficiency by Surface Type

<b>17 %</b> White Painted Ground	<b>8 %</b> Sand	<b>4 %</b> Grassland	<b>3 %</b> Water
-------------------------------------	--------------------	-------------------------	---------------------

<b>Potential Energy Yield Increase</b>	<b>30 %</b>
--	-------------

## Technical Specifications

### Key Design Benefits

- Half-cell technology reduces internal resistance
- Dual-glass structure prevents snail trails and UV aging
- Parallel design minimizes shading impact
- Tempered AR-coated glass reduces weight

<b>Front/Rear Glass Thickness</b>	2 mm
<b>Safety Classifications</b>	Fire Class A, Anti-PID