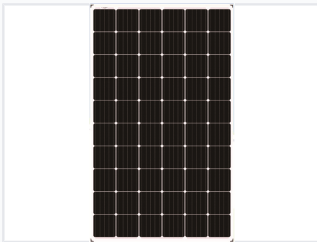


Bifacial Double Glass PV Module

This high-efficiency photovoltaic module is designed for optimal energy generation using bifacial technology and double glass construction. The module captures sunlight from both the front and rear surfaces, maximizing power output.



ADDITIONAL IMAGES



Product Overview

High-Efficiency Bifacial Technology

This double glass photovoltaic module is engineered for maximum energy yield by capturing sunlight from both front and rear surfaces. Its robust double glass construction ensures superior durability against environmental stressors, including moisture and mechanical impact. Designed for reliability, the module features advanced cell technology that minimizes degradation and enhances performance in challenging conditions, making it an ideal solution for utility-scale and commercial solar projects.

Performance & Warranty

Warranty Terms

30 Years

Linear Performance Warranty

0.5 %

Annual Degradation

Key Performance Attributes

PID Resistant, Snail Trail Free, Low Thermal Coefficients

Durability & Safety

Mechanical Load Capacity

2400 Pa

Wind Load

5400 Pa

Snow Load

Safety & Environmental

- Class-A Fireproof Level
- Resistant to sand, acid, and alkali
- 100% EL double inspection
- Enhanced micro-crack resistance

Hail Impact Resistance

97 km/h