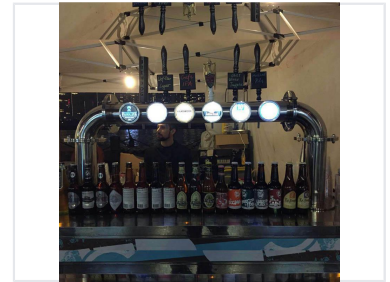


# Beer Dispensing System with Multiple Taps

This professional-grade beer tap system is designed for dispensing various beers. It features multiple taps with illuminated labels, a stainless steel dispensing tower, and a display area for bottled beers.



## Product Overview

### Professional Beer Dispensing Solution

This professional-grade beer dispensing system is engineered for high-performance service in bars, restaurants, and hospitality environments. Featuring a robust stainless steel dispensing tower and multiple tap configurations, it ensures optimal serving temperatures and presentation. The integrated cooler display cabinet combines functionality with aesthetic appeal, allowing for efficient inventory management and an inviting display for customers.

## Technical Specifications

Number of Taps	18 taps
Supported Varieties	IPA, Pils, Wiete, Trappise, Unfilter, Layer, Crafe, GULT, Holland

## Construction & Design

### Display Features

- Illuminated tap labels
- Integrated cooler cabinet
- Bottled beer display storage

Tower Material	Stainless Steel
----------------	-----------------

## Key Metrics

### System Capacity

<b>18 taps</b> Tap Capacity
--------------------------------