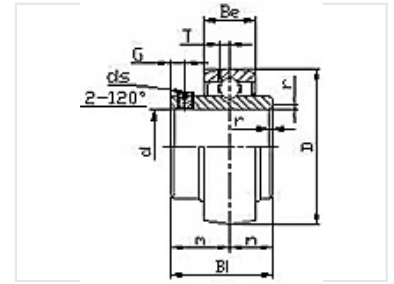


Bearing Unit for Industrial Machinery

This bearing unit is designed for machinery and industrial applications. Its robust construction is suitable for demanding environments, incorporating a bearing within a housing for easy mounting and alignment.



Product Overview

Industrial-Grade Bearing Unit

The UC300 is a high-performance bearing unit designed for demanding industrial machinery applications. It integrates a precision bearing within a robust housing, facilitating simplified mounting and precise shaft alignment. Engineered for durability, this unit minimizes friction and wear to ensure smooth, efficient rotational movement across diverse mechanical systems.

Key Features

Suitable Applications

Conveyor Systems, Power Transmission, Industrial Machinery

Technical Specifications

Performance Features

- Compact form factor for space-restricted installs
- Robust construction for demanding environments
- Precisely controlled dimensions and tolerances
- Optimized for reduced friction and wear

Design Specifications

Feature	Benefit
Housing	Integrated design for easy mounting
Alignment	Simplifies mechanical system setup
Materials	Durable composition for long service life