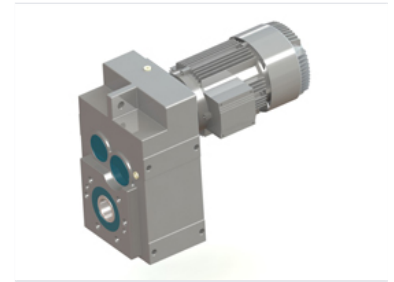


Balance Shaft Helical Gear Reducer

The balance shaft helical gear reducer is a mechanical power transmission component for industrial use. Its helical gear design ensures smooth, quiet operation and stable performance under load.



Overview

High-Performance Helical Gear Reducer

The FC series balance shaft helical gear reducer is a robust mechanical power transmission component engineered for demanding industrial environments. Featuring a helical gear configuration, it delivers smooth, quiet operation while effectively minimizing vibration and noise. The integrated balance shaft design ensures stable performance under varying load conditions, providing high torque capacity and exceptional durability for heavy-duty applications.

Technical Specifications

Gear Configuration	Helical Gear
Key Design Feature	Balance Shaft

Performance

Performance Highlights

1 Low

Noise Level

1 Minimized

Vibration

Applications

Common Industrial Applications	Conveyor Systems, Mixers, Heavy-duty Machinery
--------------------------------	--

Construction

Material Quality

High-strength materials • Wear-resistant