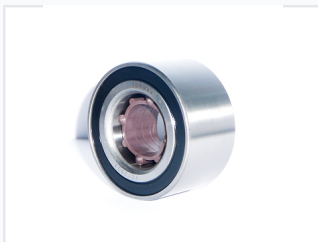


# Automotive Wheel Hub Bearing

This wheel hub bearing is precision-engineered for optimal performance and durability. It ensures smooth wheel rotation and reliable vehicle handling for a range of automotive applications.



## ADDITIONAL IMAGES



## Product Overview

### Precision Automotive Wheel Hub Bearings

These professional-grade wheel hub bearings are engineered for optimal performance and durability in demanding automotive environments. Designed for both Original Equipment (OE) and Maintenance, Repair, and Operations (MRO) markets, they ensure smooth wheel rotation and reliable vehicle handling. The range includes high-performance double angular contact ball bearings and double taper roller bearings suitable for major European vehicle makes.

## Compatibility

### Compatible Vehicle Makes

VW, Peugeot, FIAT, Renault, Audi, BMW

## Technical Specifications

### Available Configurations

- Double angular contact ball bearing
- Double taper roller bearing

### Common Series

Series	Typical Application
DAC20420030/29	Standard Automotive
DAC358047BW2RS	Sealed Hub
DAC42840036	Heavy-Duty