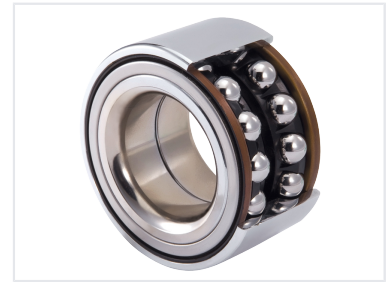


## Automotive Wheel Bearing

This automotive wheel bearing is suited for suspension and braking systems. It features an integral outer ring with a double row angular contact ball bearing or a double row tapered roller bearing.



### ADDITIONAL IMAGES

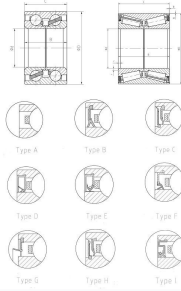


### Product Overview

#### High-Performance Automotive Wheel Bearing

This first-generation hub unit wheel bearing is engineered for modern automotive suspension and braking systems. Featuring a robust integral outer ring with a double-row angular contact ball or tapered roller design, it comes pre-filled with high-grade grease and sealed for immediate installation. Its high-precision groove construction ensures optimal pre-tightening force and long-term durability for various automotive applications.

## Technical Specifications



Technical diagram illustrating various sealing configurations (Type A-I) and internal race designs.

### Size Range

**20 mm**

Min Inner Diameter

**55 mm**

Max Inner Diameter

**42 mm**

Min Outer Diameter

**90 mm**

Max Outer Diameter

### Key Advantages

- Compact structural design
- No adjustment required during installation
- Simplified installation process
- Short loading distance
- High operational reliability

## Manufacturing and Quality

### Packing Options

Component	Details
Primary Packing	Individual box per bearing
Secondary Packing	Brown cardboard cartons
Palletization	Wooden, plywood, or plastic pallets
Branding	Custom Logo or Part Number marking

### Quality Standards

100% Pre-delivery Testing, OEM Manufacturing Available, Sample Orders Supported