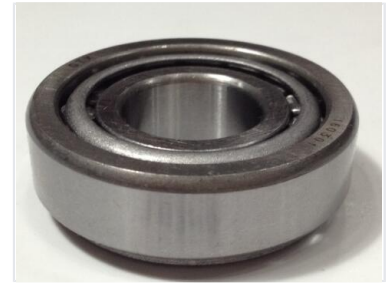


Automotive Tapered Roller Bearing

This tapered roller bearing is designed for automobile applications. It is engineered to withstand radial and axial loads, providing smooth and efficient operation in automotive systems.



ADDITIONAL IMAGES



Overview

Automotive Tapered Roller Bearing

This precision-engineered tapered roller bearing is designed specifically for demanding automotive applications. Constructed from high-quality steel, it is engineered to efficiently withstand both radial and axial loads. Its robust design ensures smooth rotational movement, contributing to improved vehicle efficiency, reliability, and extended service life under high-load conditions.

Technical Specifications

Load Handling

Radial Load Support • Axial Load Support

Bearing Type

Tapered Roller Bearing

Material

High-Quality Steel, Metallic Inner Race, Polymer/Rubber Seal

Identification

Part Identification Numbers

- 150521
- 190615
- 617
- 160301