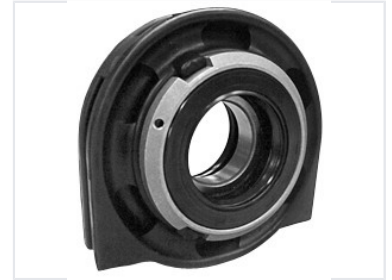


Automotive Driveshaft Center Support Bearing

This center bearing supports the driveshaft in automotive applications, reducing vibration. Its robust rubber housing dampens vibration, while the precision bearing ensures reliable power transmission, typically in vehicles using a two-piece driveshaft.



Overview

Driveline Stability Solution

This automotive driveshaft center support bearing is engineered to provide essential stability for two-piece driveshaft systems. By effectively reducing driveline vibration, it ensures smoother power transmission and enhances overall vehicle performance. The component features a robust rubber housing for superior vibration damping combined with a precision-engineered bearing for long-term reliability.

Technical Details

Key Features

- Robust rubber housing
- Vibration damping design
- Precision bearing assembly
- Optimized for two-piece driveshafts

Application	Automotive Driveline
System Compatibility	Two-piece driveshaft, Driveline support