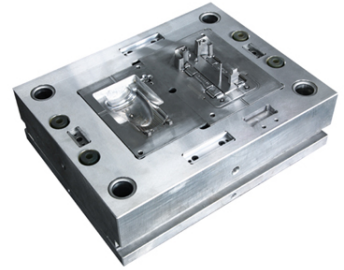


# Automotive Component Mould

Precision-engineered for high-volume manufacturing of automotive components. It ensures consistent part quality and dimensional accuracy.



## Overview

### Precision Automotive Moulding

This precision-engineered automotive component mould is designed for high-volume manufacturing environments. It ensures consistent part quality and superior dimensional accuracy, making it ideal for producing complex shapes and intricate designs. Equipped with advanced cooling channels and reliable ejector systems, this tool is built to meet the tight tolerances required by modern automotive industry applications.

## Technical Specifications

Material Compatibility	Plastic, Metal
High Volume Manufacturing	Yes

## Features

### Mould Features

- Advanced cooling channels
- Integrated ejector systems
- High-precision dimensional accuracy
- Durable construction

## Application

### Industry Application

Automotive • High-Precision Manufacturing