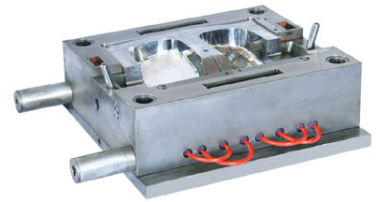


Automotive Component Injection Mold

Precision-engineered mold designed for manufacturing automotive components. It is constructed from durable tool steel with advanced cooling channels and integrated ejector pins.



Product Overview

Precision Automotive Injection Mold

This precision-engineered injection mold is specifically designed for high-volume manufacturing of automotive components. Constructed from durable tool steel, it incorporates advanced cooling channels to ensure efficient temperature regulation and significantly reduced cycle times. The mold cavity is meticulously machined to guarantee dimensional accuracy and a superior surface finish for demanding automotive applications.

Technical Construction

Material	Durable Tool Steel
Cooling System	Advanced integrated cooling channels
Ejection Mechanism	Integrated ejector pins
Alignment Features	Yes

Manufacturing Capabilities

Production Volume	High-Volume
Process Type	Injection Molding
Compatible Materials	Thermoplastics