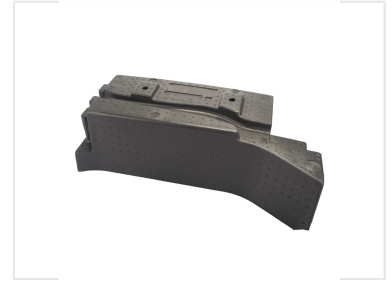
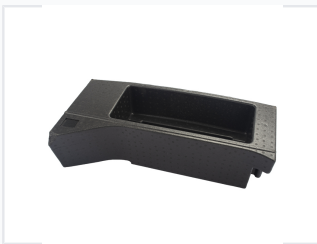


Automotive Battery Mounting Pad

This battery mounting pad is designed to securely hold and protect automotive batteries. Constructed from durable, impact-resistant material, it features a recessed compartment to accommodate various battery sizes and prevent shifting during vehicle operation.



ADDITIONAL IMAGES



Product Overview

High-Performance EPP Battery Mounting Solution

This automotive battery mounting pad is engineered from expanded polypropylene (EPP), offering exceptional seismic energy absorption and structural integrity. Designed for demanding automotive environments, the pad provides superior resistance to chemical corrosion, oil, and battery acids, ensuring long-lasting durability. Its lightweight, resilient construction stabilizes the battery during operation while providing effective thermal and sound insulation.

Material Properties

| | |
|--------------------------|--|
| Material Composition | Expanded Polypropylene (EPP) |
| Key Performance Features | Seismic Energy Absorption, Chemical Corrosion Resistant, Oil Resistant, Low Water Absorption, Thermal Insulation, Sound Insulation |

Design & Utility

Design Highlights

- Recessed compartment for secure battery fit
- Integrated drainage channels for spill management
- Textured surface for enhanced grip and stability
- Contoured shape for precise mounting

Color

Black • Dark Gray

Applications

Industry Applications

- Automotive Engine Compartments
- Vehicle Battery Mounting
- Vibration Damping Systems