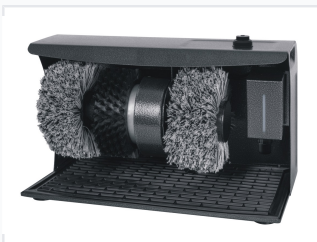


Automatic Shoe Polishing Machine with Dual Brushes

This automatic shoe polisher is designed for convenient shoe care. It features dual rotating brushes and a built-in polish dispenser to maintain shine and extend the life of leather shoes.



ADDITIONAL IMAGES



Overview

Professional Automatic Shoe Polishing Solution

This automatic shoe polishing machine is engineered to provide efficient and convenient footwear care in high-traffic environments such as offices, hotels, and homes. Featuring a powerful motor and specialized dual-brush system, it ensures a thorough clean and long-lasting shine for leather shoes. Its user-friendly design includes an integrated polish dispenser and a simple on-off control for reliable, everyday operation.

Technical Specifications

Power Rating

230 V

Voltage

120 W

Power Output

Model ID

UG600

Hardware & Features

Brush System

- 2x Detachable soft brushes
- 1x Hard brush

Key Features

Replaceable polish bottle, On-off power switch, Automatic operation

Logistics

Loading Capacity

Container Type	Quantity
20ft	720
40ft	1462
40ft HQ	1706