

Automatic Rubber Block Cutting Machine

This rotating-disc type cutting machine is designed for cutting rubber blocks into smaller pieces. It can process natural, compound, reclaimed, and synthetic rubber into blocks, slices, granules, and bars.



ADDITIONAL IMAGES



Overview



The automatic rubber shearing machine is designed for high-volume processing with minimal manual intervention.

High-Efficiency Rotating-Disc Rubber Cutter

This automatic rubber shearing machine features a modern rotating-disc design specifically engineered for processing natural, compound, reclaimed, and synthetic rubber. It offers versatile cutting capabilities, transforming large rubber bales into smaller blocks, slices, granules, or bars with minimal manual effort. Designed for industrial-scale production, it combines robust hydraulic power with a self-lubricating system to ensure long-term reliability and reduced friction during heavy-duty operation.

Key Features

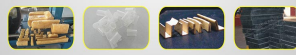
RAW MATERIAL • PRODUCTS

We not only have professional products but also have a excellent effect

Raw Material



Products



Demonstration of raw rubber blocks processed into uniform smaller pieces.

Compatible Materials

- Natural Rubber
- Compound Rubber
- Reclaimed Rubber
- Synthetic Rubber
- Other plastic/rubber materials

Operational Benefits

Easy Operation • Low Manual Labor • High Output • Self-Lubricating

Cutting Capabilities

Blocks, Slices, Granules, Bars

Technical Specifications



The machine in a professional production environment showing its robust industrial build.

Model Specifications

Model	Blade Diameter	Rotational Speed	Power	Working Pressure	Production Capacity
WQJ-1000	1000mm	50r/min	4+2.2kw	5Mpa	2t/h
WQJ-1300	1300mm	50r/min	4+2.2kw	5Mpa	3t/h

Performance Highlights

5 Mpa

Working Pressure

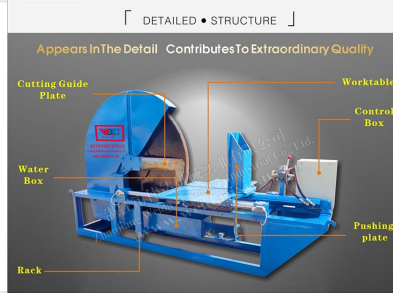
50 r/min

Blade Speed

3 t/h

Max Capacity

Design & Structure



Internal components including the cutting guide plate, worktable, and hydraulic control box.

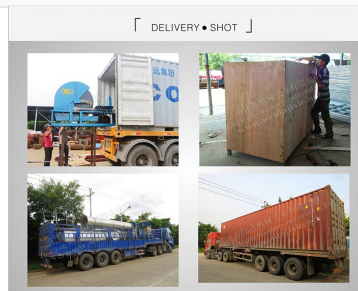
Main Components

- Cutting Guide Plate
- Worktable
- Water Box
- Control Box
- Pushing Plate
- Rack

Hydraulic Rotating Blade System

The machine utilizes a rotating blade to cut rubber bales synchronized with the reciprocating motion of the worktable. The entire movement is driven by a hydraulic system using oil as the medium, which provides the necessary force for clean cuts while ensuring internal components remain lubricated to extend service life.

Service & Installation



Units are shipped as complete assemblies to simplify on-site installation.

Installation & Support

- Delivered as a whole unit
- Connect to electricity for immediate use
- 1-year warranty on structure and equipment
- Technical support for debugging available
- Repair plan feedback within 12 hours