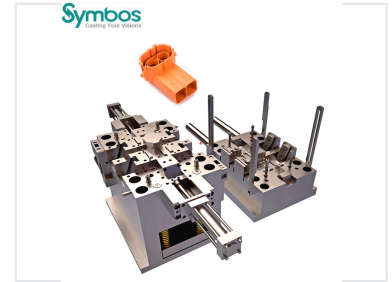
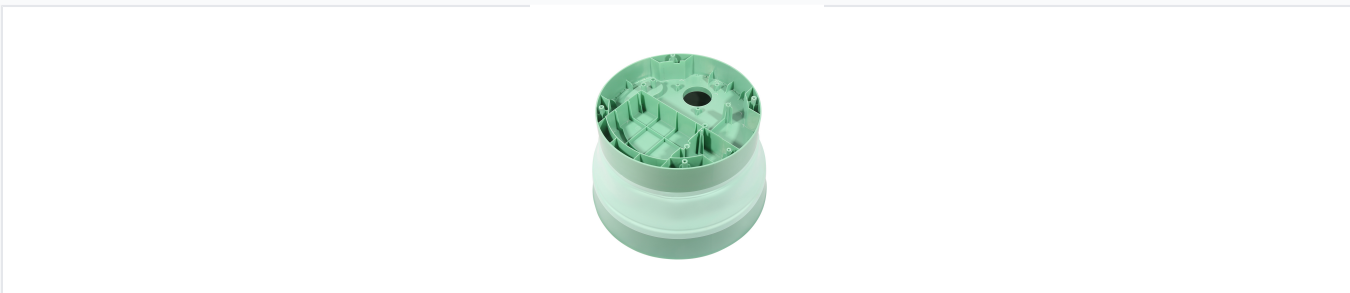


# Auto Connector Mold

This high-precision mold is designed for manufacturing auto connectors. It features robust construction and precise cavity design for accurate connector formation.



## Overview

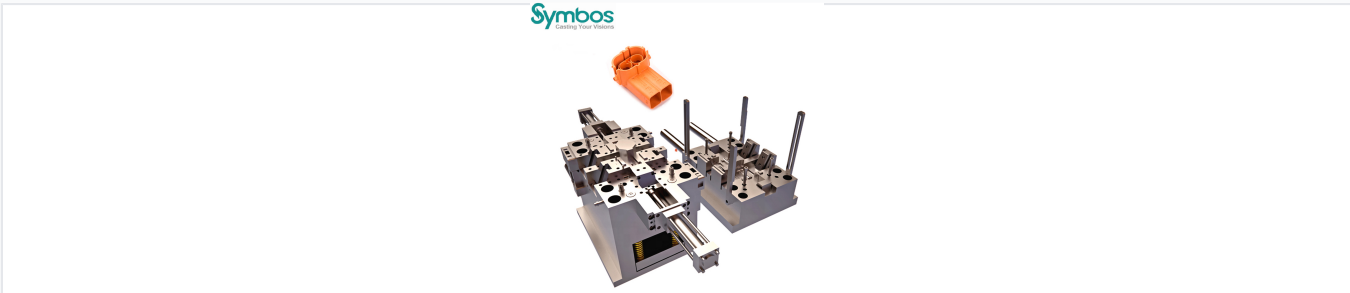


The mold features a robust, collapsible design for easy part removal and consistent dimensional stability.

### High Precision Auto Connector Mold

This high-precision injection mold is engineered specifically for the automotive connector industry. Built for reliability and efficiency, it supports high-volume production with a lifespan of up to 2 million shots. The mold is compatible with a wide range of materials and advanced runner systems, ensuring consistent quality and dimensional accuracy for complex connector geometries.

## Technical Specifications



Detailed view of the high-precision injection mold, engineered for complex connector geometries and high-volume production.

<b>Mould Life</b>	0.2-2 million Shots
<b>Tonnage</b>	50-3600T
<b>Design Software</b>	UG, Pro-E, AutoCAD, CATIA
<b>Cavity Configuration</b>	Single/Multiple Cavities
<b>Runner System</b>	Cold/Hot Runner (YUDO, HRS, Moldmaster, HUSKY, DME, etc.)
<b>Gate Types</b>	Side gate, Edge gate, Submarine, Pin Point, Horn, Direct gate, Capillar

## Materials & Standards

Mould Base Materials	P20, 45#, 4CR13
Mould Cavity Materials	P20, P20H, 718, 718H, 2738, Nak80, S136, SKD61, H13
Compatible Resins	PS, ABS, PP, PVC, PMMA, PBT, PC, POM, PA66, PA6, PEEK, HDPE, TPU, PET

## Logistics & Manufacturing

Industry Applications	Automotive • Communications • Electronics • Home Appliances
T1 Lead Time	40 days