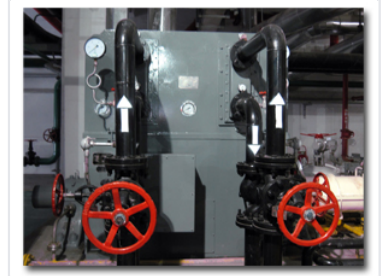


# Asynchronous Motor Water Pump for Industrial Applications

This water pump is driven by a robust asynchronous motor for efficient fluid transfer. It is suitable for water circulation, pressure boosting, and fluid transfer in industrial processes.



## Product Overview

### Industrial Fluid Transfer Solution

This high-performance water pump is driven by a robust asynchronous motor designed for demanding industrial fluid transfer tasks. It features heavy-duty construction and precision-engineered impellers for reliable, long-lasting operation in various environments. With integrated pressure gauges and flow control valves, this unit provides professional-grade monitoring and maintenance capabilities for circulation and pressure boosting.

## Technical Specifications

### Common Applications

- Water circulation
- Pressure boosting
- Fluid transfer

### Motor Technology

Asynchronous

## Features and Instrumentation

### Product Highlights

Heavy-duty construction, Precision-engineered impellers, Reliable seals, Integrated pressure gauges

### Flow Control

Yes