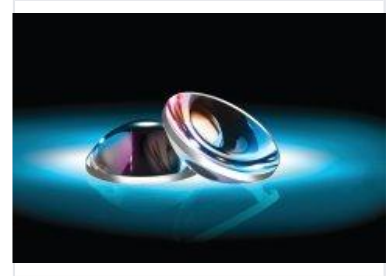


# Aspheric Lens for Optical Applications

The aspheric lens is designed for optimal light focusing and minimal spherical aberration. It is suitable for laser systems, imaging devices, and scientific instruments.



## ADDITIONAL IMAGES



## Product Overview

### High-Precision Aspheric Lenses

These aspheric lenses are designed for demanding optical applications, offering superior image quality and significantly reduced spherical aberration compared to traditional spherical lenses. They are specifically corrected for coma, astigmatism, and spherochromatism, making them an ideal choice for collimating or focusing laser diode light. Available in various materials and coatings, these lenses ensure high performance across a wide range of wavelengths.

## Optical Performance

### Wave Front Aberration

**40 ml**  
RMS

### Aberration Correction

Spherical Aberration, Coma, Astigmatism, Spherochromatism

## Technical Specifications

### Surface Quality

20-10 scratch-dig

### Focal Length Range

5mm - 500mm

### Diameter Range

5mm - 100mm

### Index of Refraction

1.5 - 1.9

## Applications

### Primary Applications

- Laser Diode Collimation
- Imaging Systems
- Scientific Instrumentation
- Beam Shaping