

Asphalt Distributor Truck

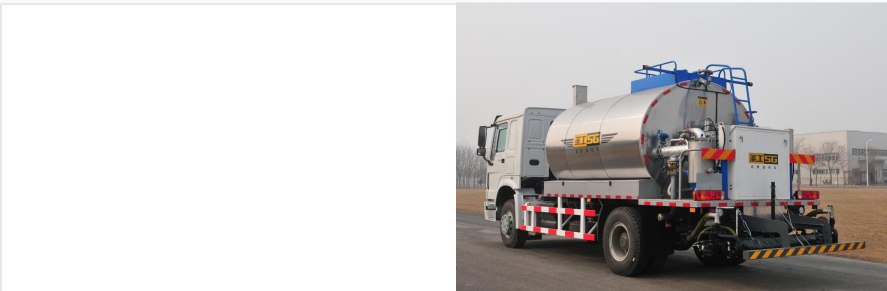
This asphalt distributor truck is designed for efficient and precise asphalt spraying on road surfaces. It features a large-capacity insulated tank to maintain asphalt temperature and a computer-controlled spraying system for accurate application rates.



ADDITIONAL IMAGES



Product Overview



Fully equipped asphalt distributor truck ready for road maintenance duties.

Professional Road Maintenance Solution

This automatic asphalt distributor is a specialized construction vehicle designed for high-efficiency application of emulsified, cutback, hot, and modified asphalt. Engineered for durability and ease of operation, it features an advanced control system that automates spray width and volume, significantly reducing manual labor and material waste. The integration of an insulated tank and high-precision nozzles ensures consistent performance across various road maintenance and surface dressing projects.

Technical Specifications

Total Gross Mass	16000 kg
Thermal Insulation	Temperature drop no more than 12°C/8h

Performance Features

Control System

- Automatic asphalt spray width control
- Automated spray volume calculation
- Remote and on-site operation modes
- Electrical and hydraulic system integration

Compatible Asphalt Types

Emulsified Asphalt, Cutback Asphalt, Hot Asphalt, Hot Modified Asphalt

Operational Highlights

Key Hardware Advantages

Component	Function/Benefit
Asphalt Pump	Internal gearing pump for stable flow and high output
Heating System	Imported diesel burner with automatic ignition
Spray Bar	Foldable and height-adjustable for versatility
Auxiliary Engine	Enables heating while the vehicle is in motion