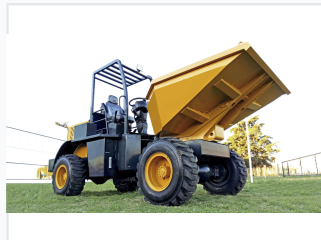
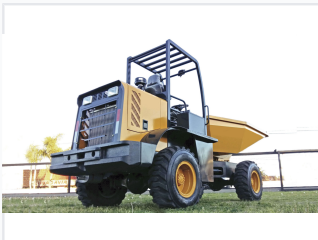


# Articulated Site Dumper

Articulated site dumpers are designed for efficient material transport on construction sites. These machines feature a heavy-duty chassis and a hydraulically operated tipping skip.



## ADDITIONAL IMAGES



## Overview

### High-Performance Articulated Site Dumper

This articulated site dumper is engineered for efficient material transport across challenging construction and landscaping terrains. Featuring a heavy-duty chassis and 4x4 drive system, it offers exceptional stability, maneuverability, and traction. With a 1500kg rated load capacity and a robust diesel engine, this vehicle is built for demanding applications requiring reliable performance and minimal downtime.

## Performance

### Key Performance Metrics

**32 kW**

Rated Power

**10 deg**

Rear Axle Swing

Rated Load	1500 kg
Operating Weight	3300 kg
Drive System	4x4

## Technical Specifications

### Dimensions and Capacity

Metric	Value
Bucket Capacity	0.7 m <sup>3</sup>
Max Dump Height	320 mm
Front Wheel to Bucket Edge	450 mm
Overall Dimensions (LxWxH)	4150x1680x2450 mm

Engine Model	Xinchai490
--------------	------------

## Features

### Key Features

Articulated Steering, 4x4 Drive, Hydraulic Tipping Skip, ROPS Safety Structure, Off-road Tires