

# Arrow Marked Convex Push Button

This arrow marked convex push button is designed with a spring return mechanism. It is ideal for use in control panels, machinery, and other equipment requiring a momentary switch function.



## Overview



Specializing in production of buttons and indicators since 1997

Durable plastic construction with clear arrow marking for intuitive industrial operation.

## Industrial Control Push Button

The arrow-marked convex push button is a robust industrial control component designed for reliable signal and interlocking operations. Constructed from zinc alloy and high-grade anti-flame plastic, it offers durability in demanding environments such as distribution cabinets and control panels. This spring-return mechanism ensures consistent performance with a long mechanical and electrical lifespan, complying with international safety standards including CE, RoHS, and IEC specifications.

## Technical Specifications

Rated Insulation Voltage	AC 600V (50Hz/60Hz)
Conventional Heating Current	10 A
Insulation Resistance	e5M©
Contact Resistance	d25m©
Withstand Voltage	AC 2.5KV/min

## Performance Metrics

### Mechanical Life

**100000 ops**  
Pushbutton Cycles

### Electrical Life

**50000 ops**  
Pushbutton Cycles

## Physical Characteristics






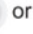




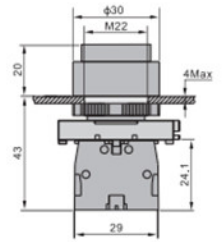
LAY5-EL3341

Convex button  
spring return  
Marked

N/O



-  Green  LAY5-EL3361
-  Green  LAY5-EL3311
-  or  LAY5-EL3341
-  or  LAY5-EL3351



Detailed dimensions including mounting hole size and overall profile for panel integration.

## Physical Dimensions

Dimension	Value
Button Diameter	20mm
Mounting Hole	M22
Overall Height	43mm
Base Width	29mm
Panel Thickness	Max 4mm

## Compliance & Standards

Certifications	CE, ISO 9001, RoHS, UL, IEC 60947-5-1
----------------	---------------------------------------