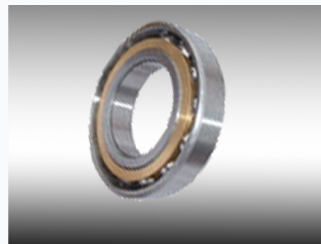
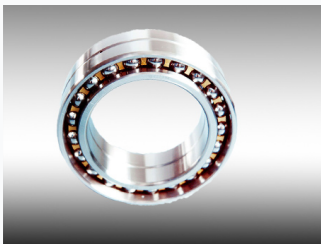


# Angular Contact Ball Bearing for High-Speed Applications

This angular contact ball bearing is designed for high-speed applications and combined radial and axial loads. It features optimized internal geometry for enhanced load capacity and reduced friction.



## ADDITIONAL IMAGES



## Product Overview

### High-Precision Angular Contact Ball Bearings

These 70 Series angular contact ball bearings are engineered for high-speed applications requiring exceptional reliability and accuracy. Manufactured to P4 and P2 precision classes, they are optimized for demanding environments such as machine tool spindles, metallurgy, and aviation. Their specialized design ensures superior performance under combined radial and axial loads.

#### Certifications

ISO 9001:2000

## Technical Specifications

### Available Contact Angles

15° • 25°

### Dimensional and Performance Table

Model	Inner (mm)	Outer (mm)	Height (mm)
7003	17	35	10
7004	20	42	12
7005	25	47	12
7006	30	55	13
7007	35	62	14
7008	40	68	15
7009	45	75	16
7010	50	80	16
7011	55	90	18
7012	60	95	18
7013	65	100	18
7014	70	110	20
7015	75	115	20
7016	80	125	22
7017	85	130	22

### Cage Material

Bakelite

## Applications

### Primary Industries

- Machine Tools
- Metallurgy
- Aviation
- Automotive
- Railways