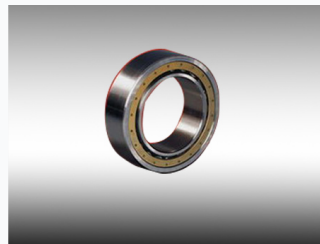


# Angular Contact Ball Bearing

Angular contact ball bearings are engineered to handle combined radial and axial loads, offering optimal performance in critical rotating equipment. Featuring optimized internal geometry and premium materials, these bearings ensure smooth operation and extended service life.



## ADDITIONAL IMAGES



## Overview

### High-Performance Angular Contact Ball Bearings

These angular contact ball bearings are engineered to support combined radial and axial loads, making them ideal for high-speed and high-precision applications. Designed with axially asymmetric races, they provide excellent rigidity and load-carrying capacity, suitable for environments ranging from machine tools to high-speed turbines. Available in various materials including steel and ceramic, these bearings offer long service life, low noise, and reliable operation under demanding industrial conditions.

## Technical Specifications

Bore Size Range	10 mm
Maximum Bore Size	200 mm
Outside Diameter Range	22 - 420 mm
Precision Ratings	P0, P6, P5, P4, P2
Material Options	Steel GCr15, Stainless Steel, Ceramic (Silicon Nitride), Brass

## Design & Configuration

### Cage Material Options

Bearing Steel • Brass • Ceramic • Synthetic Resins

Bearing Type	Angular Contact Ball Bearing
Number of Rows	Single Row
Seals Type	Open
Raceway Type	Spherical

## Performance

### Load Capability

- Radial Load
- Axial Load
- Combined Radial and Axial Loads

### Contact Angle Range

10 to 45 degrees