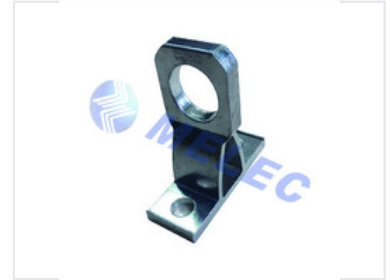


# Anchor Bracket for Electrical Cables

This anchor bracket is designed for securing wires and cables in electrical power systems. It provides a strong anchoring point for the stability and longevity of electrical installations.



## Product Overview

### JBEC-X Anchor Bracket

The JBEC-X anchor bracket is a high-performance component engineered for electrical power transmission and distribution systems. Designed for securing wires and cables, this bracket provides a robust anchoring point that ensures the stability and longevity of electrical installations. Constructed from corrosion-resistant extruded aluminium alloy, it offers superior mechanical strength to withstand demanding environmental conditions.

## Technical Specifications

Type	Failure Load (kN)	Pack (pcs)

Technical diagram detailing the anchor bracket specifications and load parameters.

### Standard

NF C 33-041

### Material

Corrosion resistant extruded aluminium alloy

## Performance Data

JBEC-X1	15(45° test) 21.75(18° test)	60
---------	------------------------------	----

Visual representation of load test performance at 18° and 45° angles.

## Load Test Performance

Test Condition	Load Value (kN)
45° test	15
18° test	21.75

## Compatibility & Usage

Compatible Components	JBGA, JBGB
-----------------------	------------