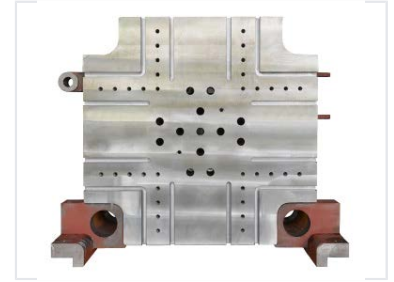
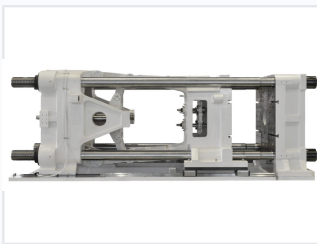


# All-Electric Plastic Injection Molding Machine

This all-electric plastic injection molding machine delivers precision and efficiency for plastic part manufacturing. It features servo-driven mechanisms for injection, clamping, and ejection, ensuring consistent and repeatable performance.



## ADDITIONAL IMAGES



## Overview

### High-Precision All-Electric Injection Molding

This all-electric plastic injection molding machine is designed for high-speed, high-precision manufacturing with a focus on energy efficiency and clean operation. It features a robust five-pin self-locking toggle structure and advanced servo-driven mechanisms to ensure consistent part quality and repeatable performance. Ideal for cleanroom environments, it minimizes noise and eliminates the need for hydraulic oil in the clamping unit.

## Key Performance Metrics

### Performance Highlights

**1200 kN**

Clamping Force

**4.6 T**

Machine Weight

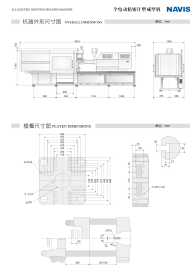
**200 mm/s**

Std. Injection Speed

**10 Years**

Belt Warranty

## Clamping Unit



### Clamping Specifications

Feature	Specification
Space Between Tie-Bars	505 x 455 mm
Platen Dimension	690 x 680 mm
Open Stroke	360 mm
Mould Thickness Range	150 - 550 mm
Ejector Force	29.4 kN
Ejector Stroke	100 mm
Number of Ejector Pins	5

## Injection Unit

### Injection Unit Options

Screw Diameter	Injection Capacity	Injection Weight (PS)	Max Pressure
25	59	54	276
32	97	88	168
38	147	134	157
45	270	246	165

## Technical Features



### Mechanical Advantages

- Zero-resistance clamping injection guider with linear track support
- High-rigidity self-locking five-point toggle clamping structure
- Tiebar-free moving platen operation (no lubrication required)
- High-efficiency lubrication system with graphite alloy steel sleeves
- T-slot and screw fixation platen with embedded locating ring
- Japanese technology servo motor and high-torque ball screw
- Safety relay for motion stability and security

## Control System

### Control & Management

Real-time Waveform Display, Advanced Production Management, High-Resolution Interface, Precise Process Control, User-Friendly HMI

## Operational Efficiency

### Efficiency & Maintenance

All-Electric Design • Low Energy Consumption • Low Noise • Cleanroom Suitable • Simple Maintenance