

Air to Water Heat Pump with EVI DC Inverter

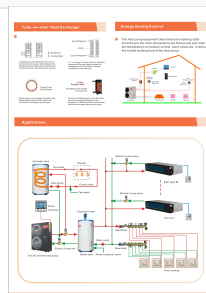
This air to water heat pump features an EVI DC inverter for efficient operation even in low temperatures. It provides heating in winter, cooling in summer, and hot water year-round.



ADDITIONAL IMAGES



Product Overview

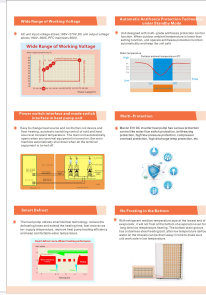


Advanced tube-in-shell heat exchanger design ensures efficient heat transfer and reliable operation.

Advanced Climate Control Solution

This EVI DC inverter air-to-water heat pump is engineered for high-efficiency performance in both residential and commercial applications. Utilizing Enhanced Vapor Injection (EVI) technology, the system maintains stable heating capacity even in extreme ambient temperatures as low as -35°C . It offers a versatile, all-in-one solution for winter heating, summer cooling, and year-round domestic hot water production, featuring intelligent control systems that reduce energy consumption by up to 30% compared to standard units.

Key Features



Comprehensive protection systems, including smart defrost and multi-grade antifreeze control, ensure safe operation.

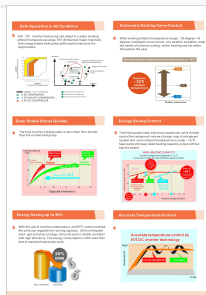
Safety Protections

- High/Low pressure protection
- Compressor overload protection
- Water flow switch protection
- Multi-grade antifreeze protection
- High discharge temperature protection
- Power loss protection

Core Technologies

EVI DC Inverter, Smart Defrost, Automatic Heating Curve, PFC Control, Split-Type Design

Performance Metrics



EVI technology enables stable heating capacity even at low ambient temperatures, with energy savings up to 30%.

Efficiency Highlights

30 %

Energy Savings

3.25

Typical COP

2.6

Average EER

Technical Specifications

Model Performance Data

Model	Cooling Capacity (kW)	Heating Capacity (kW)	Sound Level (dB(A))
09YN(BE)	7.5	9	48
15YN(BE)	12.5	15	50
18YN(BE)	14	18	51
20YN(BE)	16	20	54

Compliance

Certifications

CE • ETL • EN14511