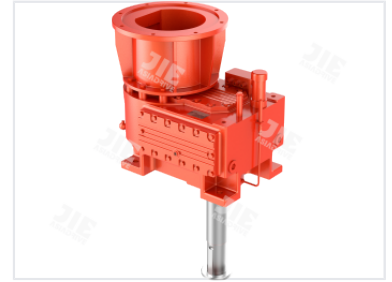


# Air-Cooled Gear Unit

This air-cooled gear unit offers high reliability and load capacity. Its modular design optimizes intensity and reduces noise, making it suitable for power equipment, port machinery, and chemical mixing applications.



## Product Overview

### Industrial Performance

This air-cooled gear unit is engineered for demanding industrial power transmission applications. It features a robust construction designed to withstand rigorous operating environments while maintaining optimal thermal efficiency. The integrated cooling system ensures consistent performance and extended service life under heavy load conditions.

## Technical Specifications

### Key Performance Metrics

<b>14 :1</b> Gear Ratio	<b>228 kW</b> Input Power	<b>21000 N.m</b> Output Torque
----------------------------	------------------------------	-----------------------------------

Model	166
-------	-----

## Design Features

### Cooling System

Air-Cooled