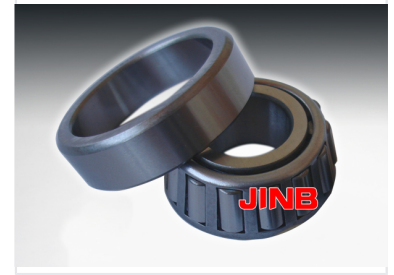
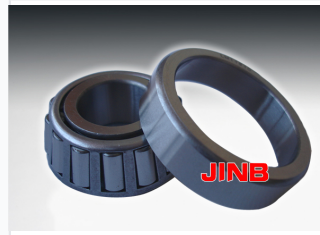
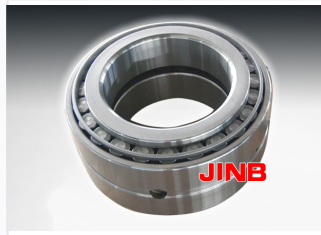
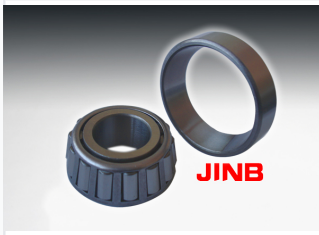


Air-Cooled Diesel Engine

This air-cooled diesel engine is designed for micro tillage machines, generator sets, and water pump units. It serves as an ideal power source for agricultural and sideline product processing machinery.



ADDITIONAL IMAGES



Overview

High-Performance Air-Cooled Diesel Engine

This air-cooled diesel engine is engineered for versatility and reliability across various industrial and agricultural applications. Featuring a compact structure and lightweight design, it incorporates a unique direct injection combustion system that ensures low fuel consumption and high power output. Designed for stable operation with low noise and vibration, this engine serves as an ideal power source for generators, water pumps, and micro-tillage machinery.

Key Features

Performance Highlights

1 Direct Injection

Combustion System

1 Recoil Hand Start

Starting Method

Operational Benefits

- Compact and lightweight design
- Low fuel consumption
- Low noise and vibration levels
- Stable and reliable performance
- Multiple output options available

Applications

Primary Applications

Micro Tillage Machines, Generator Sets, Water Pump Units, Agricultural Processing Machinery, Construction Equipment

Technical Specifications

Available Models

CP186F • CP186FS