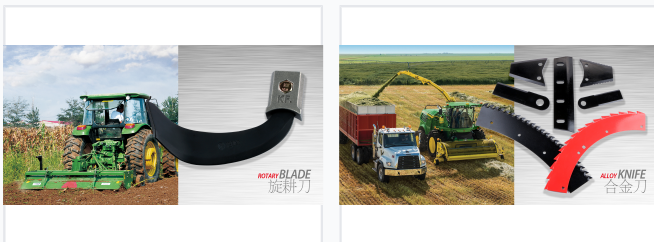


Agricultural Machinery Knife Blades

These high-quality knives are designed for agricultural machinery, including forage harvesters and cutting equipment. The knives are engineered for durability and precision cutting to ensure efficient crop processing.



ADDITIONAL IMAGES



Overview

Precision Agricultural Cutting Components

These agricultural machinery knife blades are engineered for high-performance cutting and soil cultivation. Designed with OEM-quality standards, they provide durability and precision for forage harvesters, rotary tillers, and ploughing equipment. Their robust construction ensures resistance to wear and tear, making them ideal for demanding agricultural applications and efficient crop processing.

Key Features

Quality Standards

OEM Quality • High-Strength Alloy • Wear Resistant

Compatibility & Application

Forage Harvesters, Rotary Tillers, Ploughing Equipment, Soil Cultivation

Technical Details

Available Blade Types

- Alloy Knives for Forage Harvesters
- Rotary Tiller Blades
- Agricultural Ploughshares

Performance Metrics

10.9 Grade

Hardness Grade