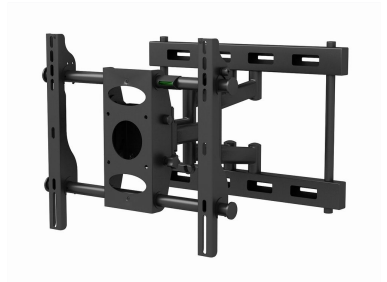


# Adjustable Tilt and Swivel TV Wall Mount

This TV wall mount is designed for 32-65 inch screens, offering both tilt and swivel adjustments. Its heavy-duty steel construction ensures secure support for various TV sizes and weights.



## Product Overview

### Full Motion Flexibility

This adjustable TV wall mount provides exceptional viewing versatility with both tilt and swivel functionality. Designed for reliability, the unit supports screens ranging from 32 to 65 inches while maintaining a robust weight capacity of 20 kg. Its ergonomic design allows for a 180-degree swing and 15-degree tilt, ensuring the perfect angle in any environment.

## Technical Specifications

### Weight Capacity

**20 KG**

Max Weight Capacity

Tilt Adjustment	15 degrees
Swivel Range	180 degrees

## Compatibility

VESA Compatibility	75x75, 200x200
Supported Screen Sizes	32-65 inches