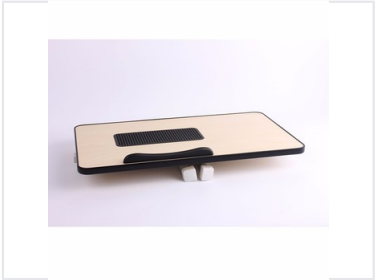
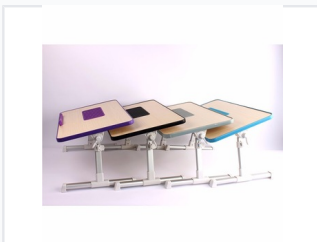


Adjustable Laptop Bed Table with Aluminum Legs

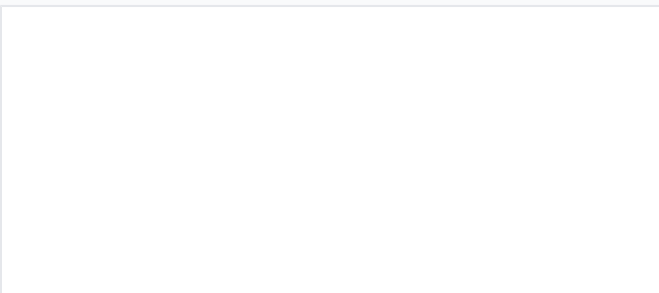
This adjustable laptop table is made with a wooden MDF panel and aluminum legs. It is super strong and can load up to 40kg, with adjustable height and angle.



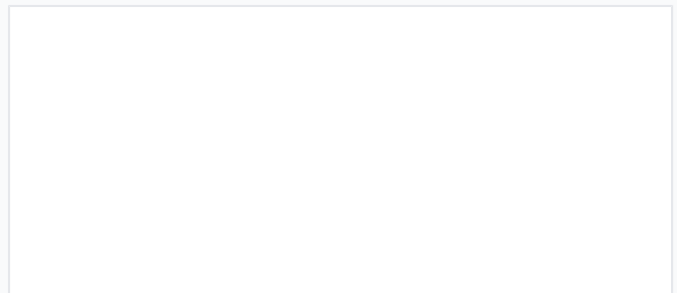
ADDITIONAL IMAGES



Overview



Portable design with ergonomic wrist rest and ventilation for cooling.



Provides a convenient and comfortable workspace for use in bed or on the couch.

Versatile Laptop Workspace

This adjustable laptop bed table is designed to provide a comfortable and ergonomic workspace in any setting, from beds and sofas to floors. Constructed with a durable wooden MDF panel and sturdy aluminum alloy legs, it supports a maximum load of 40kg. The table features adjustable height and angle settings, ensuring optimal viewing comfort for working, reading, or entertainment.

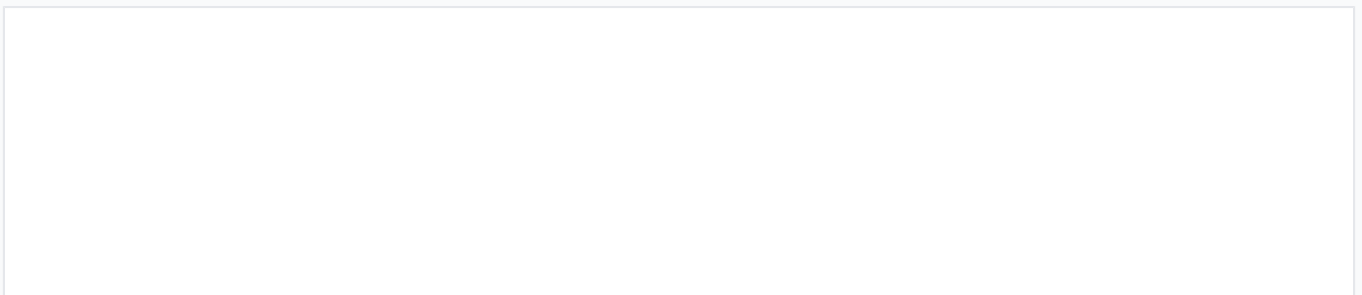
Technical Specifications



Durable aluminum alloy legs ensure stability and strength.

Materials	MDF, Aluminum Alloy, Plastic
Max Load	40 kg
Net Weight	1.9 kg

Dimensions



Clear measurements for height and surface area.

Table Surface

52 cm

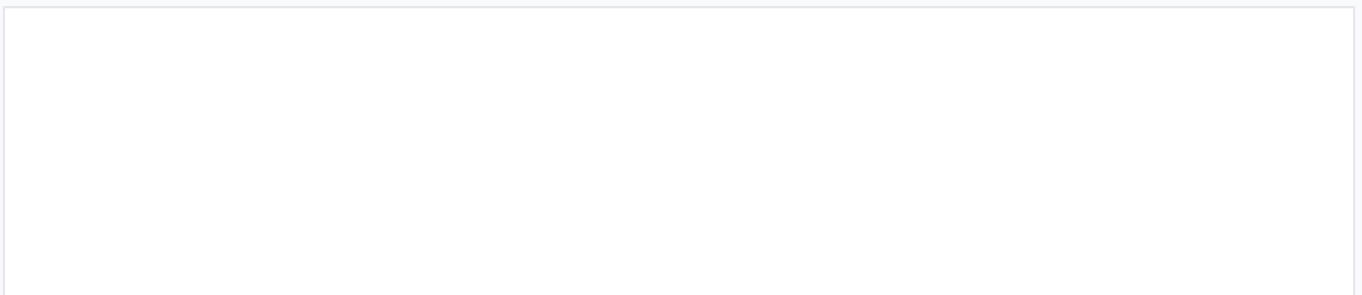
Length

30 cm

Width

Height Range	23.5 - 31.5 cm
Folded Height	6.5 cm

Features



Adjustable tilt angle from 0 to 30 degrees.

Key Features

Adjustable Height • Adjustable Angle • Foldable • Ventilation Area • Wrist Rest

Logistics

Packaging

Attribute	Value
Packing Unit	Color box
Quantity per Carton	6 pcs
Carton Dimensions	54.5 x 40 x 32.5 cm
Gross Weight per Carton	13.3 kg