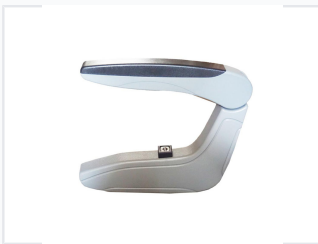


# Adjustable Automotive Plastic Armrest

This plastic armrest is designed for automotive seating applications. It features an adjustable mechanism, allowing users to customize the height for optimal ergonomic positioning.



## ADDITIONAL IMAGES



## Product Overview

### Ergonomic Automotive Comfort

This adjustable automotive armrest is engineered to enhance driver and passenger comfort during transit. Featuring a robust plastic construction, it offers both durability and a sleek, modern aesthetic that integrates seamlessly into various vehicle interiors. The integrated adjustment mechanism allows for precise height and angle positioning, ensuring optimal ergonomic support for different users.

## Technical Specifications

### Adjustment Capabilities

- Height adjustment
- Angle adjustment
- Pivoting joint mechanism

### Included Components

- Mounting hardware
- Central adjustment switch

### Material

Durable Plastic

### Color Scheme

Gray, Black

## Service & Compatibility

### Service Availability

OEM Service • ODM Service

### Compatible Applications

Luxury Bus, Business Seat, School Bus, City Bus