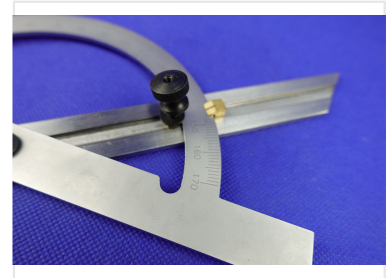
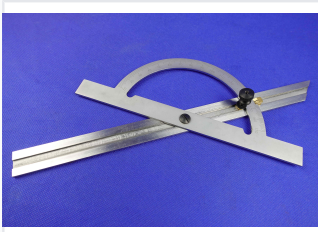


Adjustable Angle Finder Protractor

This precision instrument accurately measures and transfers angles. It features a rotating blade for setting angles and a graduated protractor head for easy reading.



ADDITIONAL IMAGES



Product Overview

Precision Angle Measurement

This adjustable angle finder protractor is a precision instrument designed for accurate angle measurement and transfer. Crafted from durable carbon steel, it ensures long-lasting performance in demanding environments like woodworking, metalworking, and engineering. The device features a rotating blade and a clearly graduated scale for easy, reliable readings.

Technical Specifications

Measurement Range

180 degrees

Maximum Angle

Material

Carbon Steel

Included Accessories

Black leather storage bag

Applications

Ideal Applications

- Woodworking
- Metalworking
- Engineering layout
- General construction