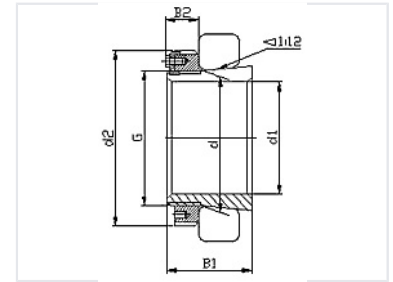


# Adapter Sleeve

Adapter sleeves are used to secure bearings with tapered bores to cylindrical shafts. They simplify bearing mounting, dismounting, and adjustments.



## Overview

### High-Performance Adapter Sleeves

These adapter sleeves are essential mechanical components designed to secure bearings with tapered bores onto cylindrical shafts efficiently. They facilitate a seamless mounting and dismounting process, allowing for precise adjustments and simplified maintenance in industrial applications. Constructed from high-strength steel, these sleeves are engineered to withstand heavy loads and significant vibrations, ensuring long-term reliability.

## Technical Specifications

Taper Ratio	1:12
Material	High-strength steel
Key Features	Easy Mounting, Vibration Resistant, Heavy Load Capacity, Adjustable

## Series H200 Dimensions

Adapter Sleeve	Shaft <sub>d1</sub>			Dimensions(mm)					Weight (kg)	Composition			
	HS in	HA in	HE in	H mm	d	d2	B <sub>1</sub>	B <sub>2</sub>		G	Sleeve	Locknut	Lockwasher
H204	7/8	13/16	3/4	17	20	32	24	7	M20x1	0.041	A204	KM4	MB04
H205	7/8	13/16	3/4	20	25	38	26	8	M25x1.5	0.07	A205	KM5	MB05
H206	7/8	15/16	1	25	30	45	27	8	M30x1.5	0.1	A206	KM6	MB06
H207	1-1/8	1-3/16	1-1/4	30	35	52	29	9	M35x1.5	0.13	A207	KM7	MB07
H208	1-3/8	1-5/16	1-1/4	35	40	58	31	10	M40x1.5	0.17	A208	KM8	MB08
H209	1-5/8	1-7/16	1-1/2	40	45	65	33	11	M45x1.5	0.23	A209	KM9	MB09
H210	1-5/8	1-11/16	1-3/4	45	50	70	35	12	M50x1.5	0.27	A210	KM10	MB10
H211	1-7/8	1-15/16	2	50	55	75	37	12	M55x2	0.31	A211	KM11	MB11
H212	2-1/8	2-1/16	2-1/4	55	60	80	38	13	M60x2	0.35	A212	KM12	MB12
H213	2-3/8	2-3/16	2-1/4	60	65	85	40	14	M65x2	0.4	A213	KM13	MB13
H214				60	70	92	41	14	M70x2	0.6	A214	KM14	MB14
H215	2-5/8	2-7/16	2-1/2	65	75	98	43	15	M75x2	0.71	A215	KM15	MB15
H216	2-7/8	2-11/16	2-3/4	70	80	105	46	17	M80x2	0.88	A216	KM16	MB16
H217		2-15/16	3	75	85	110	50	18	M85x2	1.02	A217	KM17	MB17
H218	3-1/8	3-3/16	3-1/4	80	90	120	52	18	M90x2	1.2	A218	KM18	MB18
H219		3-5/16	3-1/4	85	95	125	55	19	M95x2	1.35	A219	KM19	MB19
H220		3-7/16	3-1/2	90	100	130	58	20	M100x2	1.5	A220	KM20	MB20
H221				95	105	140	60	20	M105x2	1.7	A221	KM21	MB21
H222		3-15/16	4	100	110	145	63	21	M110x2	1.9	A222	KM22	MB22

Detailed dimensions and composition for the H200 series adapter sleeves.

## H200 Series Specifications

Model	Shaft (mm)	d2 (mm)	B1 (mm)	Thread (G)	Weight (kg)
H204	17	32	24	M20x1	0.041
H205	20	38	26	M25x1.5	0.07
H208	35	58	31	M40x1.5	0.17
H210	45	70	35	M50x1.5	0.27
H215	65	98	43	M75x2	0.71
H220	90	130	58	M100x2	1.5
H222	100	145	63	M110x2	1.9

## Series H300 Dimensions

Adapter Sleeve	Shaft d1				Dimensions (mm)			Weight (kg)	Composition				
	HS in	HA in	HE in	H mm	d2	B1	B2		G	Sleeve	Locknut	Lockwasher	
H304				17	20	32	28	7	M20x1	0.045	A304	KM4	MB4
H305	7/8	13/16	3/4	20	25	38	29	8	M25x1.5	0.075	A305	KM5	MB5
H306	7/8	15/16	1	25	30	45	31	8	M30x1.5	0.11	A306	KM6	MB6
H307	1-1/8	1-3/16	1-1/4	30	35	52	35	9	M35x1.5	0.14	A307	KM7	MB7
H308	1-3/8	1-5/16	1-1/4	35	40	58	36	10	M40x1.5	0.19	A308	KM8	MB8
H309	1-5/8	1-7/16	1-1/2	40	45	65	39	11	M45x1.5	0.25	A309	KM9	MB9
H310	1-5/8	1-11/16	1-3/4	45	50	70	42	12	M50x1.5	0.3	A310	KM10	MB10
H311	1-7/8	1-15/16	2	50	55	75	45	12	M55x2	0.35	A311	KM11	MB11
H312	2-1/8	2-1/16	2-1/4	55	60	80	47	13	M60x2	0.39	A312	KM12	MB12
H313	2-3/8	2-3/16	2-1/4	60	65	85	50	14	M65x2	0.46	A313	KM13	MB13
H314				60	70	92	52	14	M70x2	0.72	A314	KM14	MB14
H315	2-5/8	2-7/16	2-1/2	65	75	95	55	15	M75x2	0.83	A315	KM15	MB15
H316	2-7/8	2-11/16	2-3/4	70	80	105	59	17	M80x2	1	A316	KM16	MB16
H317		2-15/16	3	75	85	110	63	18	M85x2	1.2	A317	KM17	MB17
H318	3-1/8	3-3/16	3-1/4	80	90	120	65	18	M90x2	1.35	A318	KM18	MB18
H319		3-5/16	3-1/4	85	95	125	68	19	M95x2	1.55	A319	KM19	MB19
H320		3-7/16	3-1/2	90	100	130	71	20	M100x2	1.7	A320	KM20	MB20
H321				95	105	140	74	20	M105x2	1.95	A321	KM21	MB21
H322		3-15/16	4	100	110	145	77	21	M110x2	2.2	A322	KM22	MB22

Detailed dimensions and composition for the H300 series adapter sleeves.

### H300 Series Specifications

Model	Shaft (mm)	d2 (mm)	B1 (mm)	Thread (G)	Weight (kg)
H304	17	32	28	M20x1	0.045
H305	20	38	29	M25x1.5	0.075
H308	35	58	36	M40x1.5	0.19
H310	45	70	42	M50x1.5	0.3
H315	65	98	55	M75x2	0.83
H320	90	130	71	M100x2	1.7
H322	100	145	77	M110x2	2.2

## Components

### Standard Assembly Components

- Adapter Sleeve
- Locknut (KM Series)
- Lockwasher (MB Series)