

AC Metal-Enclosed Ring Network Switchgear



This AC metal-enclosed ring network switchgear is compact, lightweight, and simple to operate with low maintenance. It is suitable for receiving and distributing electrical energy in AC 50Hz, 12kV systems.

Product Overview

High-Efficiency Ring Network Switchgear

The HXGN-12(SF6) unit type AC metal-enclosed ring main unit is a modern, high-pressure electrical solution designed for robust power distribution. Engineered for both urban and agricultural grid transformations, it offers reliable performance, a compact footprint, and long-term durability. The design features advanced interlock systems and protective measures, ensuring safe, low-maintenance operation across diverse environmental conditions.

Technical Specifications

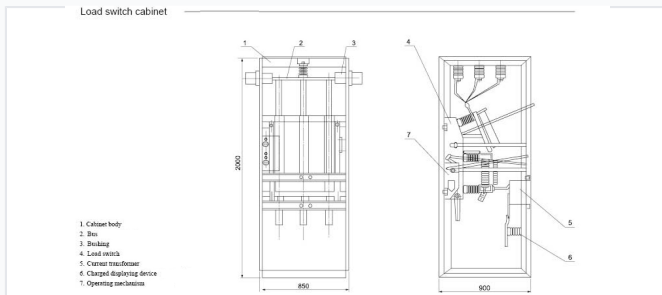
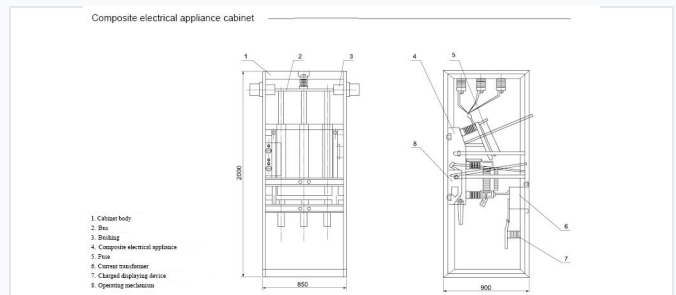


Diagram of the internal cabinet arrangement showing bus, load switch, and current transformer placement.



Detailed view of the composite electrical appliance configuration within the ring network cabinet.

| | |
|----------------------------|----------------|
| Certified Standards | IEC298, GB3906 |
| Protection Rating | IP3X |
| Rated Frequency | 50 Hz |
| Rated Voltage | 12 kV |

Environmental Conditions

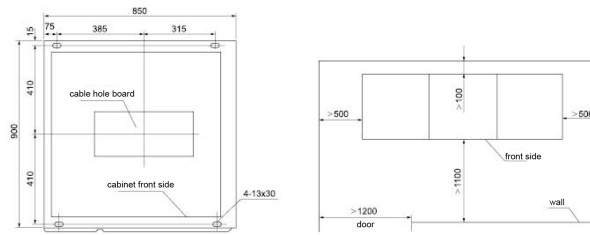
Relative Humidity

- Daily average d 95%
- Secondary average d 90%

| | |
|--------------------------|----------------|
| Temperature Range | -25°C to +40°C |
| Maximum Altitude | 2000 m |

Physical Dimensions

cabinet installation



Technical drawing detailing dimensions, cable hole placement, and required installation clearances.

Unit Dimensions (H x W x D)

2000 mm

Height

850 mm

Width

900 mm

Depth