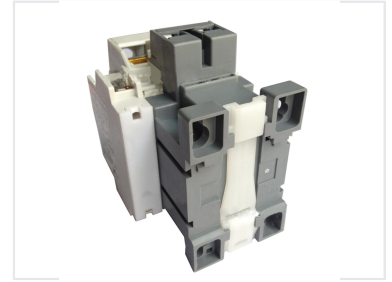
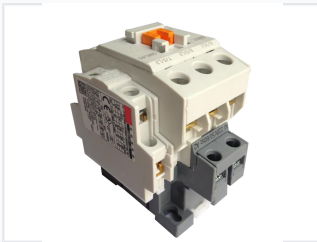


AC Contactor Magnetic Electronic for HVAC

This AC contactor is an electronic type with magnetic actuation and a definite purpose design. It provides reliable switching for compressors, fans, and other motor loads in HVAC systems.



ADDITIONAL IMAGES



Product Overview



Definite purpose magnetic contactor designed for reliable HVAC switching.

High-Performance HVAC Contactor

This electronic-type AC magnetic contactor is engineered specifically for HVAC and refrigeration applications. Designed for reliability in demanding environments, it provides consistent switching for compressors, fans, and other motor-driven loads. Its robust construction and definite-purpose design ensure long-term operational efficiency in commercial and residential climate control systems.

Technical Specifications

Model Number	GMC-40
Electricity Type	AC
Number of Poles	3
Rated Current Range	9A - 110A
Main Circuit Rating Voltage	220V / 380V
Coil Voltage (50Hz)	24V, 42V, 48V, 100V, 110V, 220V, 240V, 380V, 400V, 415V, 440V, 500V, 550V
Coil Voltage (60Hz)	24V, 48V, 110V, 120V, 208V, 220V, 240V, 277V, 380V, 440V, 480V, 600V

Performance Data

Type	GMC -09	GMC -12	GMC -18	GMC -22	GMC -32	GMC -40	GMC -50	GMC -65	GMC -75	GMC -85	
AC3 duty	09A	12A	18A	22A	32A	40A	50A	65A	75A	85A	
AC1 duty	20A	20A	25A	32A	50A	60A	80A	100A	110A	135A	
AC3 duty	200-240V	2.5kW	3.5kW	4.5kW	5.5kW	7.5kW	11kW	15kW	18.5kW	22kW	25kW
	380-440V	4kW	5.5kW	7.5kW	11kW	15kW	18.5kW	22kW	30kW	37kW	45kW
	500-600V	4kW	7.5kW	7.5kW	15kW	18.5kW	22kW	30kW	37kW	45kW	45kW
	690V	4kW	7.5kW	7.5kW	15kW	18.5kW	22kW	30kW	37kW	45kW	45kW
	thermal current(Ith)	20A	25A	30A	32A	45A	50A	70A	80A	90A	100A
	AC motor	115V	0.5HP	0.5HP	1HP	2HP	2HP	3HP	3HP	5HP	5HP
AC motor	230V	1HP	2HP	3HP	3HP	5HP	5HP	7.5HP	10HP	15HP	15HP
	200V	2HP	3HP	5HP	7HP	7.5HP	10HP	10HP	15HP	20HP	25HP
	230V	3HP	3HP	5HP	7.5HP	10HP	10HP	15HP	20HP	25HP	30HP
	460V	2HP	7.5HP	10HP	10HP	20HP	25HP	30HP	40HP	50HP	50HP
	575V	5HP	10HP	15HP	15HP	20HP	25HP	30HP	40HP	50HP	50HP

Detailed performance specifications for various GMC model configurations.

Operational Performance

Model	Aux. Contact	32A (220-240V)	40A (220-240V)
GMC-32	1NO+1NC	7.5KW	-
GMC-40	1NO+1NC	-	11KW

Certifications

Compliance

CUL Certified • CE Certified