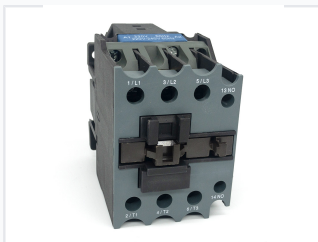


AC Contactor

This AC contactor is designed for switching electrical circuits. It provides reliable operation in various industrial and commercial applications.



ADDITIONAL IMAGES



Overview

Professional AC Contactor

This AC contactor is engineered for reliable remote circuit switching and motor control in industrial environments. Designed for AC 50Hz or 60Hz systems with voltages up to 690V, it ensures stable performance for frequent starting operations. When paired with an appropriate thermal relay, it provides essential overload protection for connected electrical circuits.

Electrical Ratings

Rated Working Current

95 A

Rated Current (AC-3)

Voltage Specifications

- Rated Voltage up to 690V
- Coil Voltage: 220V (50Hz)
- Coil Voltage: 220V-240V (60Hz)

Standards & Compliance

Compliance Standards

CB/T14048.4, IEC 60947-4-1

Technical Details

Terminal Configuration

| Terminal Type | Label |
|-------------------|------------------|
| Power Input | 1/L1, 3/L2, 5/L3 |
| Power Output | 2/T1, 4/T2, 6/T3 |
| Auxiliary Contact | 13 NO, 14 NO |
| Coil Terminals | A1, A2 |

| | |
|---------------------------|---------|
| Pole Configuration | 3 poles |
|---------------------------|---------|