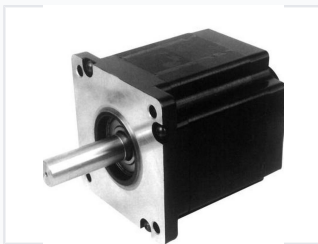


90mm Brushless DC Gear Motor

This brushless DC gear motor features a 90mm frame size. It delivers high power density, small moment of inertia, and long service life for demanding motion control applications.



ADDITIONAL IMAGES



Introduction

High-Performance 90mm Brushless DC Gear Motor

This 90mm series brushless DC motor is designed for high-performance motion control, offering high power density, quick reaction, and a long service life. Its permanent magnet construction ensures high efficiency and energy savings compared to traditional DC motors, while the brushless design eliminates sparks and reduces noise. With a waterproof protection feature and compatibility with various reducers, it is an ideal solution for CNC machines, industrial control, and home appliances.

Performance Highlights

Key Performance Metrics

3000 RPM

Max Rated Speed

785 W

Max Power

2.5 N·m

Max Torque

Technical Specifications

Protection Rating

IP40 Standard • IP65 Optional • Waterproof

Work Duty

- S1 (Continuous)
- S2
- S3

Motor Type

Brushless DC Gear Motor

Construction

Permanent Magnet

Number of Poles

8

Insulation Class

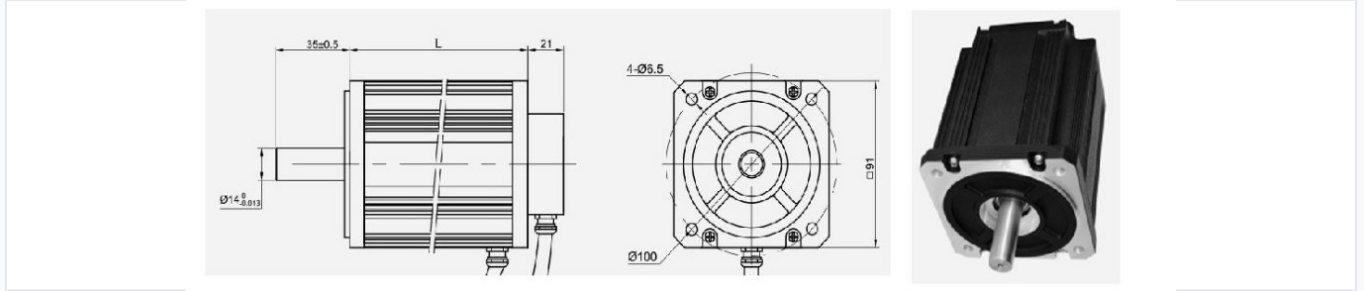
Class B, Class F

Model Comparison

Model Performance Data

Model Number	Voltage (VDC)	Power (W)	Torque (N-m)	Body Length (mm)
90BLB0A015304RN-01	12	157	0.5	68
90BLB1B022304RN-01	24	220	0.7	75
90BLB2D026304RN-01	48	267	0.85	88
90BLB3D053304RN-01	48	534	1.7	108
90BLB4J078304RN-01	310	785	2.5	136

Physical Dimensions



Dimensional specifications for the 90mm series motor, including shaft details and mounting hole patterns.

Frame Size	90mm
Shaft Diameter	14 mm
Square Flange Dimension	91 mm

Applications

Typical Applications	CNC Machine Tools, Robotics, Medical Equipment, Electric Bicycles, Home Appliances, Industrial Control
----------------------	--

Compliance

Certifications

CCC • CE