

8-Ton Hydraulic Knuckle Boom Truck Crane

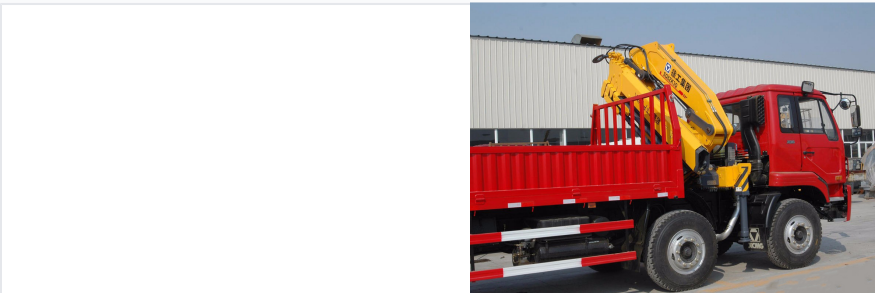
This truck-mounted crane features a hydraulic lift and telescopic system for lifting and rotating goods. It is assembled on a truck and includes a truck chassis, cargo compartment, and power take-off.



ADDITIONAL IMAGES



Overview



8-Ton Hydraulic Knuckle Boom Crane

This hydraulic truck-mounted crane features a high-efficiency telescopic knuckle boom design, optimized for precise lifting and maneuvering in confined work environments. Engineered for reliability, it includes advanced safety alarm systems and a robust hydraulic architecture to handle loads up to 8 tons. Its compact hinge point and bridge structure design minimize installation space and reduce chassis stress during transport, making it an ideal choice for diverse construction and industrial logistics applications.

Technical Performance



Key Performance Metrics

8000 kg

Max Lifting Capacity

16 t.m

Max Lifting Moment

360 °

Rotation Angle

Hydraulic System Data

Parameter	Value	Unit
Recommended Power	28	kw
Max Oil Flow	40	L/min
Max Pressure	28	Mpa
Oil Tank Capacity	160	L

Mechanical Data

Physical Specifications

- Crane Weight: 2970 kg
- Installation Space: 1150 mm

Features

Key Operational Features

Single cylinder synchronization, Anti-bending boom design, Safety alarm system, Three-point bridge structure, Anti-slewing impulse equipment