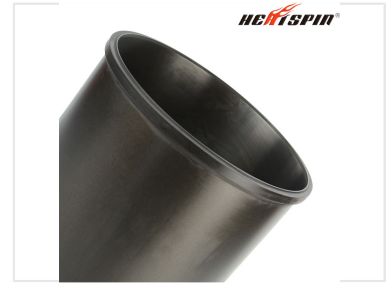


# 6WF1 Engine Cylinder Liner

The 6WF1 Cylinder Liner is a precision-engineered component for automotive engines. It provides a wear-resistant surface for piston rings, contributing to efficient combustion and reduced oil consumption.



## ADDITIONAL IMAGES



## Product Overview

### Precision Engine Component

This cylinder liner is a precision-engineered component designed specifically for 6WF1 engine applications. Constructed from high-quality iron material, it features a phosphated surface treatment and a specialized firewall design to ensure optimal durability and wear resistance. It provides a reliable surface for piston rings, facilitating efficient combustion, proper heat dissipation, and reduced oil consumption for engine longevity.

## Technical Specifications

Bore Diameter	147 mm
Total Height	267 mm
Flanger Diameter	158.3 mm
Cylinder Configuration	6

## Material & Construction

Material	Iron
Surface Treatment	Phosphated, Firewall

## Compatibility

OEM Reference Number	1-11261333-2
Engine Model	6WF1